



WISDOM ACADEMY

Introduction to Feng Shui

JAMPA LUDRUP

Lesson 5:
Essentials of the Compass School, Part 1

Course Notes



Jampa Ludrup' s Essentials of Compass School Feng Shui Course



COURSE OUTLINE

Module one

Introduction to Feng Shui

- An ancient art with modern relevance

The schools of Feng Shui

- Form school
- Compass school
- Flying Star

Determining your personal directions

- Formula
- Tables
- Gregorian versus Chinese calendar



COURSE OUTLINE

Module Two

Fundamentals of the Compass School

- History
- Ba Gua and Lo Shu
- Early Heaven and Late Heaven
- Trigrams and the I Ching

The Ba Gua

- Characteristics of the directions
- Use of the Ba Gua
- Earth
- Fire
- Metal
- Constructive cycle
- Destructive cycle
- Exhaustive cycle

Exercise

- Placement of the elements



COURSE OUTLINE

Module three

Review of the exercise

Feng Shui tools

- Wind-chimes
- Plants and wood
- Fish tanks and fountains
- Light
- Crystals and boulders
- Using a compass

Applying the Lo Shu square to the building

Exercise

- Apply the Lo Shu square and place the elements

Introduction to Flying Star

- The Time dimension
- The Grand Duke, Three Killings and Five Yellows



Aims of this course

By the end of this course you should be able to:

- Understand the basis of Compass School Feng Shui.
- Use the formula to determine your good and bad directions.
- Use the Compass School and Form School techniques for success with Wealth, Health, Reputation, Mentors, Children, Romance, Career and Knowledge.
- Understand the importance of Flying Star Feng Shui and identify the locations of three major negative time influences.



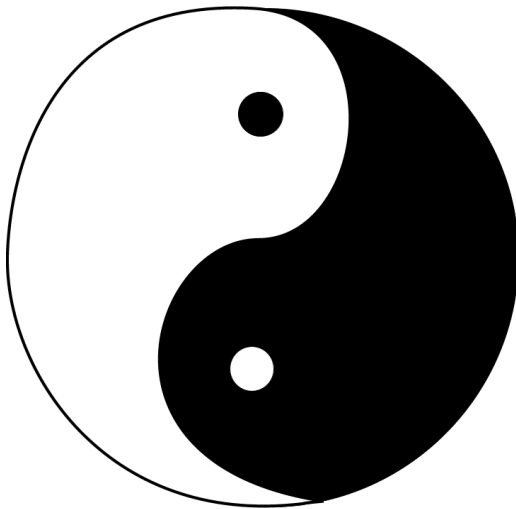
History of Feng Shui



- Feng Shui means ‘wind’ and ‘water’ .
- It developed over a period of at least four thousand years in China
- It became perfected under the Emperors of the Ming dynasty (1368 – 1644) and Ching dynasty (1644 to 1912).
- Only the Imperial Palace and the ruling class were allowed to practice authentic Feng Shui.
- Under Communism, Feng Shui went to Taiwan
- Today, masters such as Yap Cheng Hai have freely passed on their secret knowledge.



Philosophical basis of Feng Shui



- Rooted in Taoism, the trigrams of the I Ching and the concept of Ying and Yang.
- Feng Shui is not Buddhist. However, Buddha said

‘As much as you can help others. And if you can’ t help them then at least don’ t harm them’
- History of monk practitioners
- We need all the help we can get in our spiritual practice.

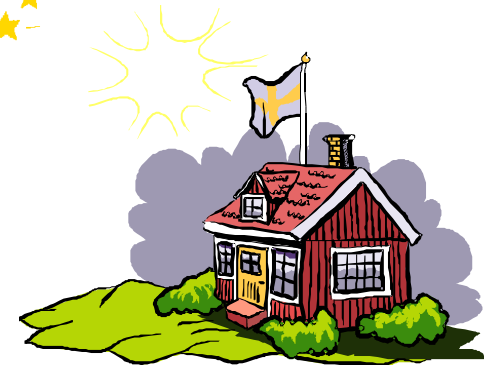


Three types of luck

Heaven luck — Previous karma; the luck you were born with, and the result of your present virtuous actions.

Earth luck — This is the environmental luck associated with landscape and living space that can cause heaven luck to ripen.

Man luck — What you do with the opportunities that arise at any particular time.





Modern relevance

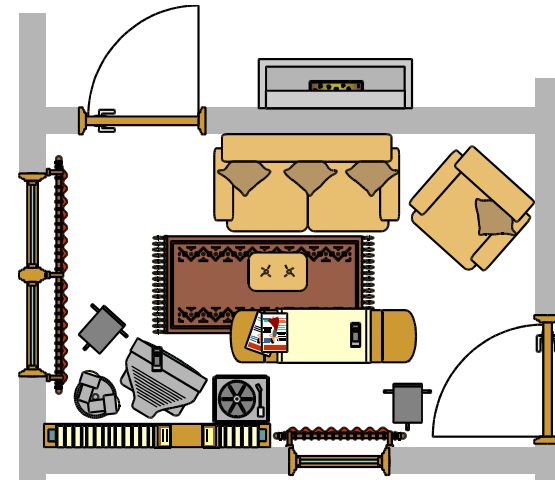
- Practical and easy to put into effect
- Very effective if it is done correctly
- Free from belief systems
- Relatively inexpensive
- Quick results
- Rewards the effort of study



Three schools of Feng Shui

Form School

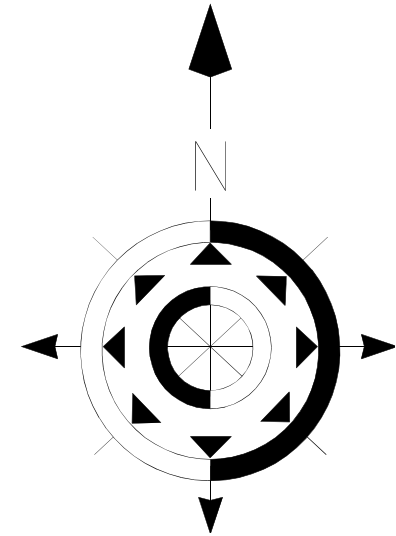
- Landscape
- Land shape
- House shape and location
- Room shape and position
- Poison arrows





Compass School

- Based on the Lo Shu square and the Ba Gua.
- Personal directions based on the year of birth
- Uses the five elements and their corresponding locations to enhance different kinds of luck
- Uses the productive, destructive, supportive and exhaustive cycles of elements
- It makes use of Feng Shui tools - compass, wind chimes, water, plants, crystals and light





Flying Star School

- Concerned with the time dimension of Feng Shui
- Based on the Lo Shu square and the Ba Gua
- Predicts cycles of luck over 20 year periods
- Also can predict luck during each yearly and monthly period
- Particularly potent – especially for wealth and relationships
- The main form of Feng Shui practiced by the Grand Masters
- Uses the Lo Pan or Geomancer' s compass
- Very complicated – not for beginners
- Based on Form School and Compass School but can override them





Sheng Chi wanders slowly in curves

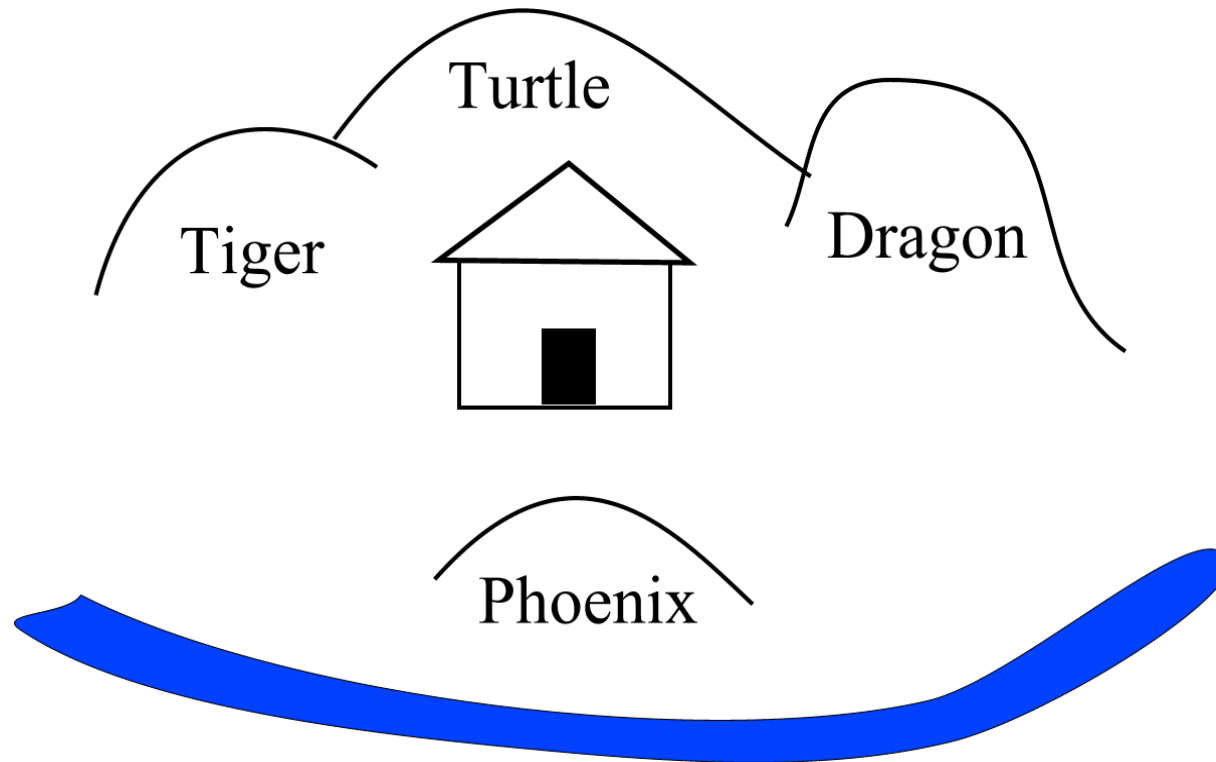
Shar Chi travels in straight lines



- Sheng Chi is known as the ‘Dragon’ s Cosmic Breath’
- Not in windy places
- Not in still stagnant places
- Accumulates where there are breezes
- Healthy energy
- Accumulates around slow meandering water
- Not around fast moving rivers and roads
- Shar Chi is Sheng Chi that is forced to move in straight lines
- Sheng Chi that is forced to move fast
- Forms ‘poison arrows’
- Mountains, hills, rivers, lakes, roads, man made structures all affect Chi
- The more it can be encouraged to gather, embrace and move slowly the better the environment
- Feng Shui has a lot to do with deflecting, dissolving and dispersing Shar Chi.
- In Compass School, the direction from which the Chi comes and where it settles is very important.



Form School - Landscape





Introduction to Compass School

- The Form School is all about external environmental Chi
- The Compass School attempted to harmonise the external Chi with the internal Chi of the individual person.



*Compass
School
formula*



The Formula

For birth dates up to 1999.

- First you need to determine your life number known as the 'Gua' number. The Gua number is based on the Chinese lunar calendar, which starts in January or February of each year.

Males

- Take the last two digits of your year of birth
- Add together and reduce to a single number
- Deduct from 10
- For example - 1954
- $5 + 4 = 9$
- $10 - 9 = 1$
- Gua number is 1



Females

- Take the last two digits of your year of birth
- Add together and reduce to a single number
- Add 5
- For example - 1979
- $7 + 9 = 16$
- $1 + 6 = 7$
- Add 5
- $7 + 5 = 12$
- $1 + 2 = 3$
- Gua number is 3



Gua Formula

- Beware if you are born in January or February because we are talking about the Chinese year not the Gregorian year.
- If you were born before January 21st use the previous year in the calculation.
- If you were born between January 21st and February 19th you need to check the tables to determine the exact start of the new year.

There is a different formula for children born in 2000 and after.

Add all the numbers of the year together – for example $2+0+0+4$

For boys deduct from 11; and for girls add 4.

- Gua numbers 1,3,4, and 9 are East group people.
- Gua numbers 5,2,6,7 and 8 are West group people.



East group directions

Gua number	1	3	4	9
Best/wealth direction	SE	S	N	E
Health direction	E	N	S	SE
Relationship direction	S	SE	E	N
Development direction	N	E	SE	S
Unlucky direction	W	SW	NW	NE
Five ghosts direction	NE	NW	SW	W
Six killings direction	NW	NE	W	SW
Total loss direction	SW	W	NE	NW



West group directions

Gua number	5 Male	5 Female	2	6	7	8
Best/wealth direction	NE	SW	NE	W	NW	SW
Health direction	W	NW	W	NE	SW	NW
Relationship direction	NW	W	NW	SW	NE	W
Development direction	SW	NE	SW	NW	W	NE
Unlucky direction	E	S	E	SE	N	S
Five ghosts direction	SE	N	SE	E	S	N
Six killings direction	S	E	S	N	SE	E
Total loss direction	N	SE	N	S	E	SE



Best directions

Sheng Chi (Wealth)

- Sheng Chi means ‘generating breath’. It is the best direction for bringing money luck. In politics it will bring a high and honourable position. It will enable you to have five sons. It is often called the ‘best’ or ‘wealth’ direction. Master Yap called it the plus 90 per cent direction. You see it as +90 on his Lo pan.

Tien Yi (Health)

- Tien Yi means ‘doctor from heaven’. Here you can expect middle wealth, good friends, three sons. It cures inexplicable long-term illnesses. It is good to position the power source of the cooker coming from this direction. It is called the ‘second best’, ‘health’ or +80 per cent.



Best directions

Nien Yen (Relationships)

- Nien Yen means 'longevity with rich descendants'. It creates harmonious family relationships. It corrects family problems such as bickering between couples, inability to have children and inability to find a partner. It is called the 'third best', 'romance', 'relationships' or +70 per cent direction.

Fu Wei (Development)

- Fu Wei brings a good life without spectacular wealth. More boys than girls. It is also associated with growth and personal development. All children should use this direction. It is called the 'fourth best', 'growth', 'development' or +60 per cent direction.



Worst directions

Ho Hai (Little unlucky)

- Ho Hai means ‘accidents and mishaps’ . It brings problems but not extreme ones. You may lose a court case, or win but lose money. It is the fourth worst or - 60 per cent direction.

Wu Kuei (More unlucky)

- Wu Kuei means ‘five ghosts’ . You could suffer from fire and burglary. Your employees may leave you. The youngest child could get hurt. Quarrels and a lack of peace at home and work. It is called the ‘third worst’ or -70 per cent direction.



Worst directions

Lui Sha (Very unlucky)

- Lui Sha means ‘six killings’ . It causes grievous harm to the family and the family business. There are legal problems, illness, even death. It is called the ‘second worst’ or -80 per cent direction.

Cheuh Ming (Total Loss)

- Cheuh Ming means ‘total loss’ . If the main door faces your Cheuh Ming direction you will lose all your descendants and the family name will come to an end. You could lose all your wealth. Everything will go wrong. Ill health in the family. Avoid this direction at all costs - it is deadly. It is called the ‘worst’ or -90 per cent direction.



Front door direction

- We must take into account both the facing direction of the house and its sitting direction.
- The facing direction is the direction the front door faces.
- The sitting direction is the direction of the back of the house.
- A house that faces Southeast, sits Northwest.
- The only good front door orientations for East group people are North and South.
- The only good front door orientations for West group people are Northeast and Southwest.
- This means that people with Gua numbers 1, 9, 6 and 7 cannot use their best direction for their front door.



To use your best directions:

- Face your best directions when working, eating, at meetings, when negotiating.
- Sleep with your head towards your best direction. Couples from different groups use least bad directions.
- Children sleep with head towards 'growth' direction.
- Locate the bedroom, office or study in these directions.
- Have the front door, bedroom door, office door, study door facing these directions.
- Have the power source for the cookers coming from these directions.
- Have the telephone/fax/email line coming from these directions.
- Travel from your best direction. When you travel, you bring luck from the direction that you travel from. Make that your best direction.
- Relocate from your best direction. Even go to the trouble of going to a 'half-way' house for some time to avoid moving from one of your bad directions.